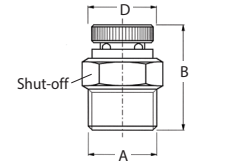


Job: _____ Engineer: _____ Contractor: _____ Rep: _____

ITEM NO.	MODEL NO.	

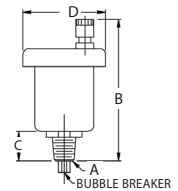
417 Coin Vent

Installed on water or steam radiators the Taco automatic coin vent is the ideal air purging device. The coin vent features special hygroscopic cellulose discs in the valve body. When dry the discs allow air to be released from the system. Once all the air is purged the discs would then come in contact with system water, where upon they would swell to create a positive shut-off. This continuous cycle prevents the radiators from becoming air bound and speeds the process of filling the system. The vent can also be manually shut-off by means of an internal ball check. The 417 coin vent is suitable for use in water and low pressure steam applications.



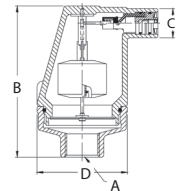
Hy-Vent®

The Taco Hy-Vent® has become the industry standard for dependable long life service. Available in 1/8", 1/4" and 1/2" x 3/4" threaded connections, the high capacity float style vents can be placed either on the boiler or at the high points throughout the system. Now with operating pressure ratings of up to 250 psi, the brass body, nickel plated vents meet the system requirements of even the largest installation. The vents are also easily serviceable if needed, by just unscrewing the vent cap.



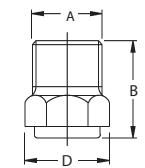
409 Vent

The Taco 409 air vent is a heavy duty brass vent rated to 150 psi system operating pressure. The conical shape of the vent significantly increases the clearance between the water level and internal mechanisms, reducing the potential that dirt floating on the top of the water could foul the venting operation. It features a convenient outlet connection for a 3/4" ID flex tube waste connection. It's high capacity design makes it ideal for placement throughout commercial systems.



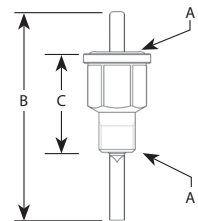
Hy-Vent® Waste Connector

The Hy-Vent® Waste Connector screws onto the outlet connection of the Hy-Vents (models 400, 426, 418, 416) to provide a worry-free installation. The 1/4" threads easily connect to a waste line, preventing water damage if the vent ever leaks.



Hy-Vent® Service Check Valve

For easy removal of 1/8" Hy-Vents (models 400 and 416 only). The service check screws onto the Hy-Vent and allows the vent to be replaced without having to drain any fluid from the system.



Dimensions

Product Number	Description	A	B	C	D	Bubble Breaker	Quantity Per Box	Max. System Conditions	Max. Venting Pressure
417	Taco-Vent® Coin Vent	1/8" NPT	1"	---	35/64"	No	12	125 psi, 240°F *	125 psi
400	Hy-Vent®	1/8" NPT	3-3/16"	13/32"	1-13/16"	Yes	1	150 psi, 240°F	50 psi
416	Slim-Line Hy-Vent®	1/8" NPT	3-1/8"	13/32"	1-1/2"	Yes	14	150 psi, 240°F	115 psi
426	Hy-Vent®	1/4" NPT	3-3/16"	13/32"	1-13/16"	Yes	1	150 psi, 240°F	50 psi
418	Hy-Vent®	1/2" x 3/4" NPT	3-11/32"	17/32"	1-13/16"	No	1	150 psi, 240°F	50 psi
419	High Pressure Hy-Vent®	1/2" x 3/4" NPT	3-1/2"	17/32"	1-13/16"	No	1	250 psi, 240°F	150 psi
409	Commercially Rated Brass Vent**	3/4" NPT	4-3/4"	**	2-13/16"	No	1	150 psi, 240°F	150 psi
414	Waste Connector	1/4" NPT	3/4"	---	5/8"	---	1	150 psi, 240°F	---
415	Hy-Vent® Service Check Valve	1/8" NPT	2-1/4"	1"	---	---	1	150 psi, 240°F	---

* Suitable for use in low pressure steam systems.

** Outlet connection fits 3/4" ID Flex tubing.

400 series vents are suitable for use in water or water/ glycol solution with a maximum of 50% glycol. 417 vent is suitable for water only.

